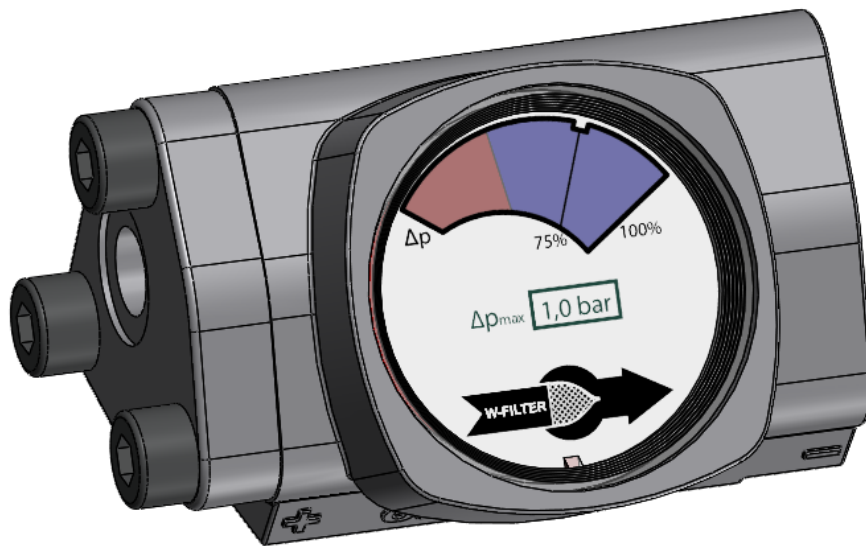


## Differential Pressure Indicator Type W-DP-5.02



## Technical Data



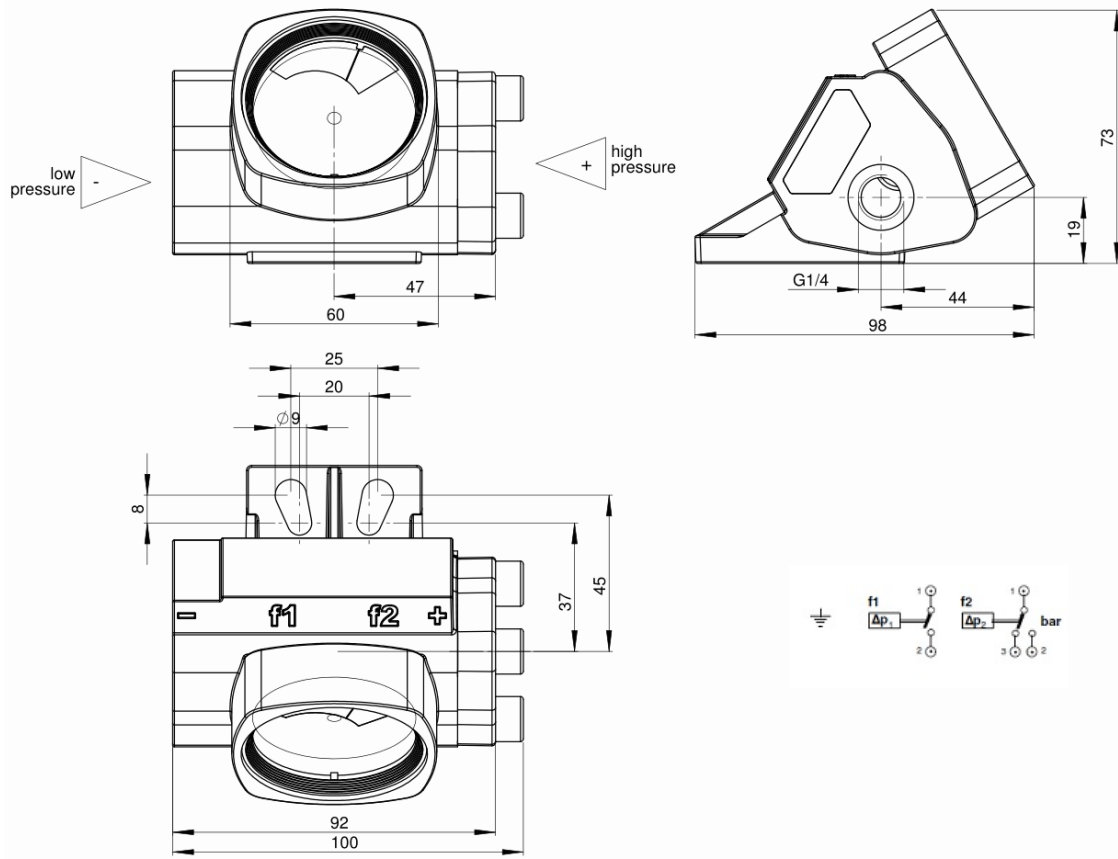
T: +49 (0)62 32 4 49 86  
F: +49 (0)62 32 39 86  
info@w-filter.com  
www.w-filter.com



## Differential Pressure Indicator Type W-DP-5.02 - Technical Data

Standard:  $\Delta p=0.5/1.0$  bar; 180° alignment

### Dimension

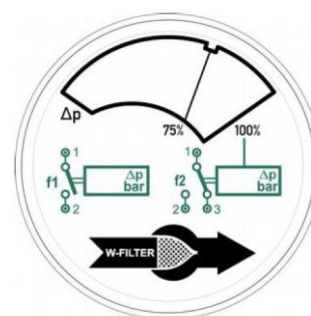
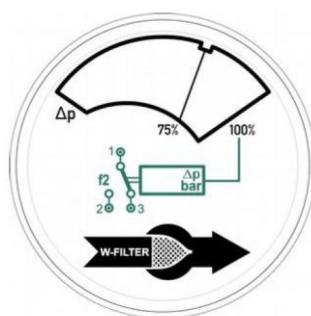
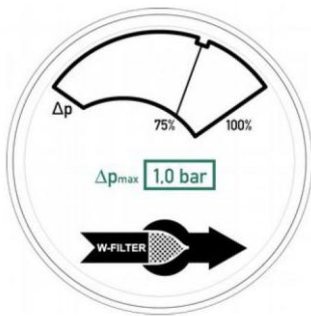


### Options:

a) analog

b) 1 contact (f2)

c) 2 contacts (f1 + f2)



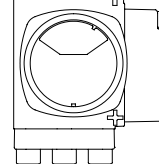
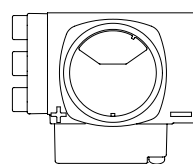
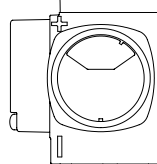
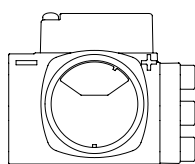
### Sight-glass alignment: (standard 180°)

0° alignment

90° alignment

180° alignment

270° alignment





## Application

Differential pressure indicators serve to monitor a variable pressure difference. They can be used with fuels, lubricating oils, hydraulic oils, emulsions and water, for example.

## Functioning

A hermetically sealed piston moves with increasing pressure difference against the effect of a calibrated measuring element.

The piston position corresponding with the respective differential pressure is permanently magnetically transferred to the indicator disk at a rotation angle analogue to the differential pressure. This analogically indicates the increasing differential pressure from blue=Differential pressure 0 bar to red=Differential pressure maximum.

In addition, electrical signals can be generated at up to two switching points within the indication range. NO contacts and changeover contacts are available for this purpose.

## Technical Data

Permissible operation pressure	100 bar
Permissible operation tem.	Medium: max. 120°C
Ambient / housing temperature:	max. 120°C (depending on attachment parts)
Cable gland:	max. 100°C
Basic measuring range standard:	starting at 0 bar up to $\Delta p_{\max} = 0.5 - 1.0$ bar
Optical signalling:	V-shape 110° (0,1...1,0 x $\Delta p_{\max}$ ) via rotating disk blue (clean) / red (dirty)
Installation position:	any
Electrical signalling:	can be equipped with 0 / 1 / 2 contacts Type f1: NO contact (standard switch-point at 0.75x $\Delta p$ ) Type f2: changeover contact (standard switch-point at 1.0x $\Delta p$ )
Switching accuracy:	$\pm 0,05$ bar ( $\Delta p_{\max} \leq 2.0$ bar)
Switching capacity:	contact Type f1: 120W / 250 V / 3.0 A / 120 VA contact Type f2: 30W / 250 V / 1.0 A / 60 VA

## Material (standard design)

Housing:	GK-AlSi 12 (Cu) hard-coated
Piston:	Ms 58 (exposed to medium)
Measuring element:	1.4310 (CrNi-Stahl) (exposed to medium)
Screws:	Stainless Steel
Seal (roll membrane):	NBR
Cable-galnd:	PA (Polyamide); seal: CR (chloroprene rubber)

## Connections

Fixtures:	2x universal slot, spacing 20mm / 25mm fitting M6 / M8 hexagon screws
Fluid connections:	internal thread both sides G ¼", suitable screw joints DIN 2353
Switch contact (standard):	Terminal strip with cover cap and cable gland (IP65) suitable for connection cables max. 1.5mm <sup>2</sup> , stripping length $\leq 8$ mm





## Type code

<b>W-DP 5.02-1,0 (1,0=Δp measuring range)</b>	Basic device without electrical contacts
includes:	Spring made of 1.4310
	Piston made of Ms 58
	Roll membrane NBR
	Sight-glass with inscription "W-FILTER"

<b>W-DP 5.02</b>	<b>1.0</b>	<b>.T</b>	<b>f1.0.7</b>	<b>f2.1.0</b>	<b>V</b>	<b>VA</b>	<b>O</b>	<b>1</b>	<b>Y</b>	<b>S</b>	
											<b>Sight-glass inscription</b>
											N neutral
											S standard „W-FILTER“
											<b>Sight-glass alignment</b> no info = 0° see page 2)
											X 90°
											Y 180° (standard)
											Z 270°
											<b>Electr. connection/connector (if with contact(s) standard terminal strip)</b>
											1 1x DIN 43650 plug
											2 2x DIN 43650 plug
											3 1x circular plug M12 4-
											4 2x circular plug M12 4-
											5 1x Han-7D plug
											<b>Piston design (standard roll membrane)</b>
											O for O-Ring
											HD for high-pressure attachm.
											P with Kotef seal (PTFE ring)
											<b>Piston material (standard Ms 58)</b>
											VA 1.4435 (CrNi-Seel)
											<b>Seal material (standard NBR)</b>
											V FPM (fluorine-polymer-rubber)
											E EPDM (ethylene-propylene rubber)
											<b>Changeover contact f2</b>
											f2.X,X Switch-point in bar (standard: 100% Δp max.)
											other switch-points on request
											<b>NO contact f1</b>
											f1.X,X Switch-point in bar /standard 75% Δp max.)
											other switch-points on request
											<b>Measuring element</b>
											X,X,T additional T for PTFE coated
											<b>Measuring range</b>
											X,X Δp max.. 0.5 / 1.0
											<b>Series</b>
											DP 5.02 Type W-DP 5.02

